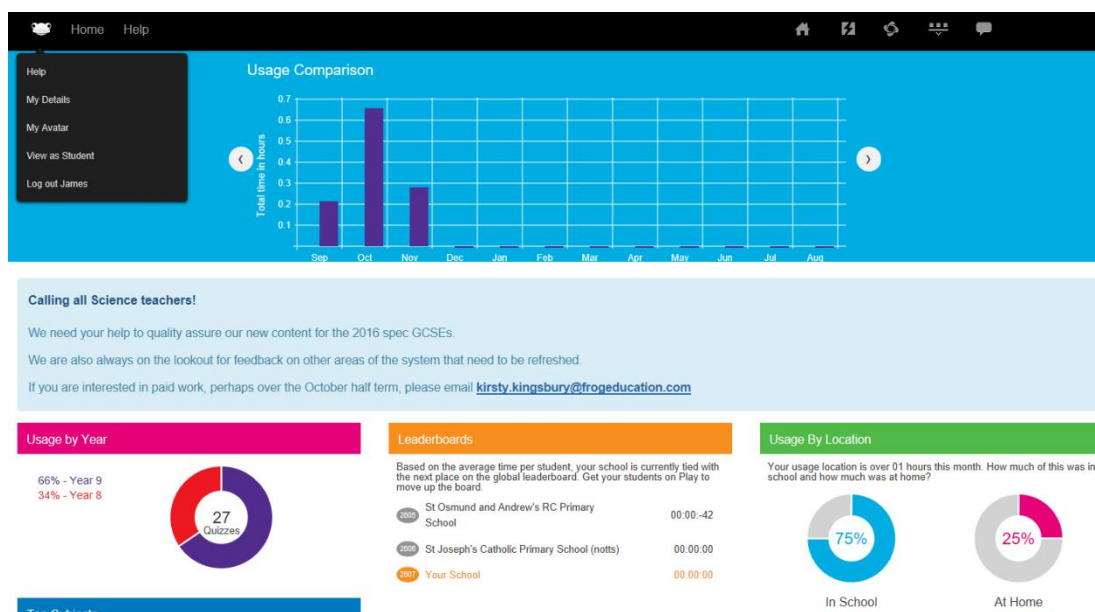
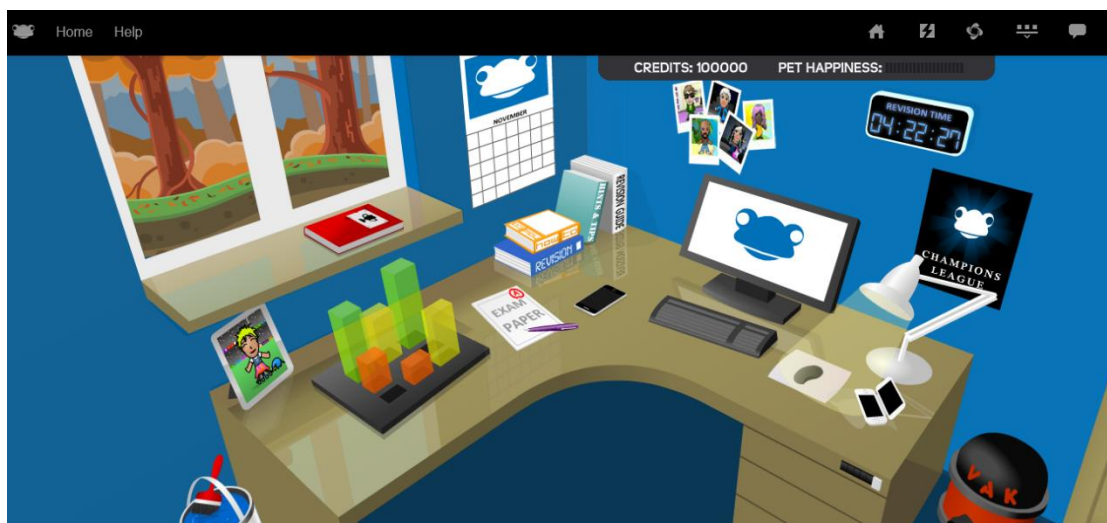


When logged in as a teacher you may wish to experience the system as a student so you will be able to use the same functionality that a student would within your school.

Click on the Frog head in the top left corner and you will see the option to change to student view.



You will be able to explore the system and use every aspect as if you were a student user – undertaking activities, viewing the reports and viewing the Champions league.



To change back to “Teacher View”, click on the same button on the navigation bar and then click on “View as Teacher”.